



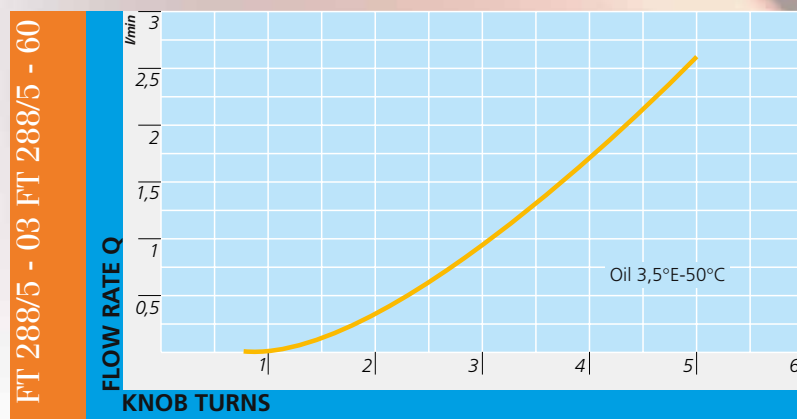
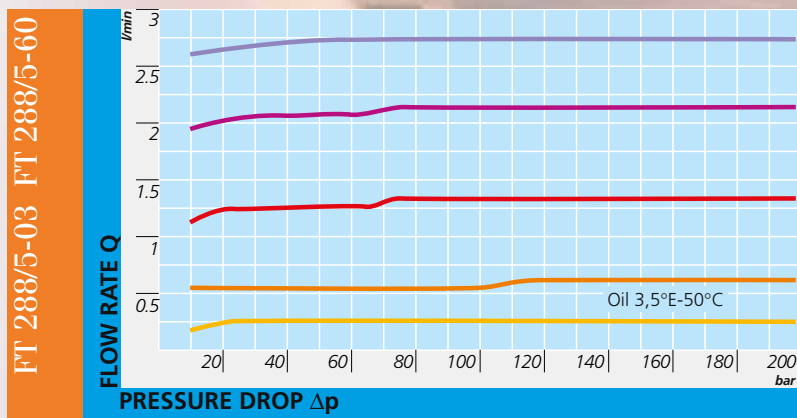
FT 288/5

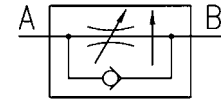


## MATERIALS

VALVE BODY	11 S MN Pb 30 - UNI EN 10087
ADJUSTING MEMBERS	35 S MN Pb 10 - UNI EN 10087
COMPENSATION PISTON	38 NI CR MO 5 - UNI EN 10083 HEAT TREATED
HANDWHEEL	GD AL SI - UNI EN AB 46100
NIPPLE	NYLON 6
BALL GUIDE	NYLON 66 + CARBON FIBER
BALL	STEEL - UNI 100 C 6
SPRING	STAINLESS STEEL AISI 302
PLUG	STEEL 35 S MN Pb 10 - UNI EN 10087
OR	NITRILE
ANTIEXTRUSION RINGS	PTFE

*All components are surface treated and protected*





**SINGLE-ACTING PRESSURE COMPENSATED MICROFINE FLOW CONTROL PLATE VALVES**

They are "single-acting" version of the valves series FT 288/2 while principal characteristics are maintained. The single-acting device, of ball type, allows a flow rate section. They are provided with plate connections mod. CETOP 03 or interchangeable with the broadly used valves. The connection seals are equipped in series. The sealings are supplied in series. Max. working pressure 250 bar.

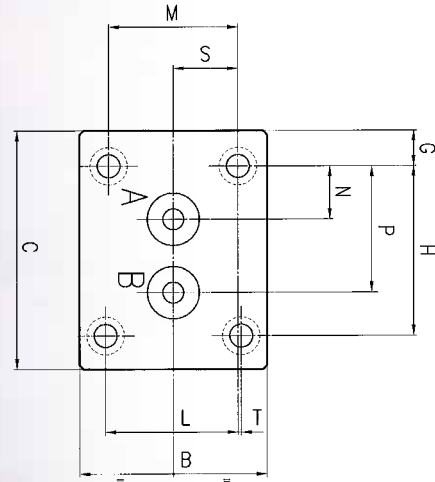
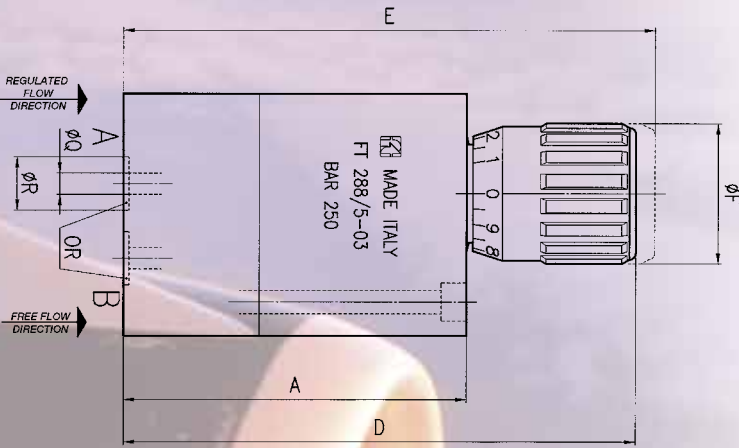


**FT 288/5**



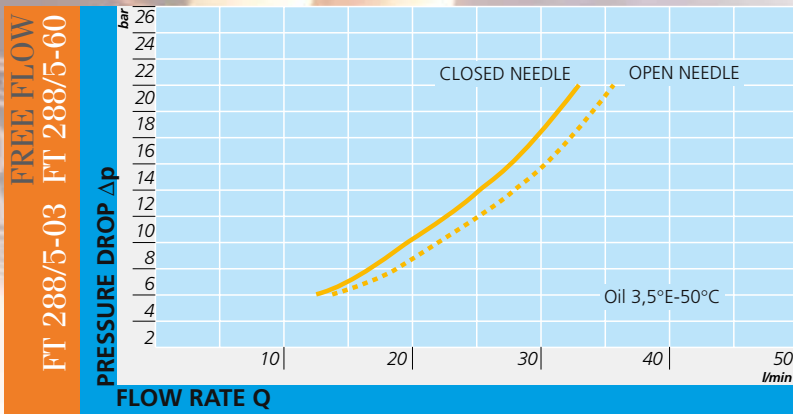
**EXAMPLE FOR ORDERING**

CODE	TYPE
FT 288/5	60



**DIMENSIONS**

TIPO	A	B	C	D	E	$\phi F$	G	H	L	M	N	P	$\phi Q$	$\phi R$	S	T	OR	SCREW	WEIGHT KG
03	81	45	57	121	125,5	33	8,5	40,5	31,75	31	12,7	30,2	5	12,5	15,5	0,75	2037	M5x85	1,490
60	84	45	57	124	128,5	33	8,5	40,5	31,75	31	10	33	6	17,2	15,5	0,75	2056	M5x90	1,530





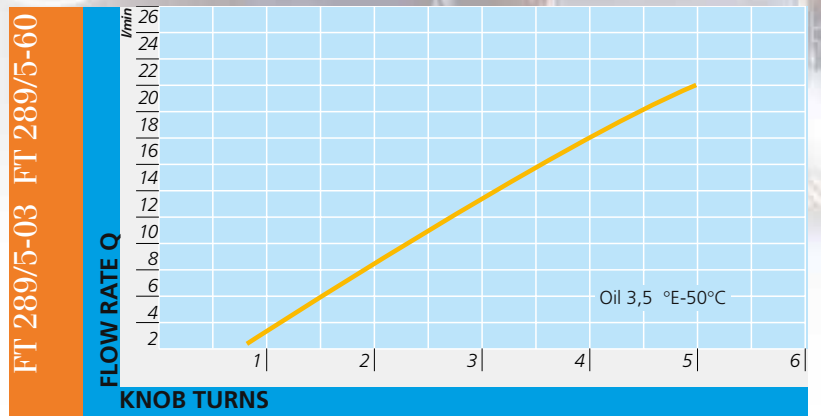
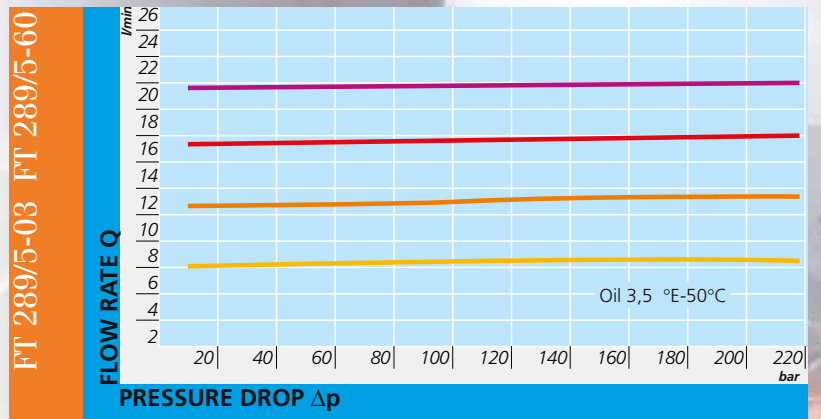
FT 289/5

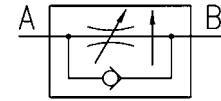


**MATERIALS**

VALVE BODY	11 S MN PB 30 - UNI EN 10087
ADJUSTING MEMBERS	35 S MN PB 10 - UNI EN 10087
COMPENSATION PISTON	38 NI CR MO 5 - UNI EN 10083 HEAT TREATED
HANDWHEEL	GD AL SI - UNI EN AB 46100 PAINTED
NIPPLE	NYLON 6
BALL GUIDE	NYLON 66 + CARBON FIBER
BALL	STEEL - UNI 100 C 6
SPRING	STAINLESS STEEL AISI 302
PLUG	STEEL 35 S MN PB 10 - UNI EN 10087
OR	NITRILE
ANTIEXTRUSION RINGS	PTFE

*All components are surface treated and protected*





**SINGLE-ACTING PRESSURE COMPENSATED MICROFINE FLOW CONTROL PLATE VALVES**

They are the "single-acting" version of the valve series FT 289/2 whose main characteristics are maintained.  
They are provided with plate connections mod. CETOP 03 or interchangeable with the broadly used valves. The connection seals are equipped in series.  
The sealings are supplied in series.  
Max. working pressure 250 bar.

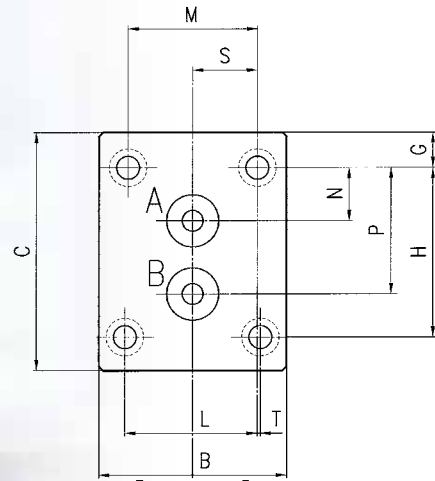
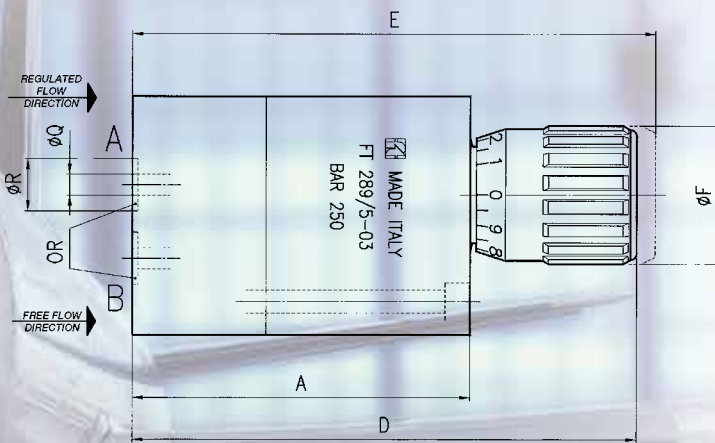


**FT 289/5**



**EXAMPLE FOR ORDERING**

CODICE	TYPE
FT 289/5	60



**DIMENSIONS**

TYPE	A	B	C	D	E	øF	G	H	L	M	N	P	øQ	øR	S	T	OR	SCREW	WEIGHT KG
03	81	45	57	121	125,5	33	8,5	40,5	31,75	31	12,7	30,2	5	12,5	15,5	0,75	2037	M5x85	1.490
60	84	45	57	124	128,5	33	8,5	40,5	31,75	31	10	33	6	17,2	15,5	0,75	2056	M5x90	1.530

