

**END PLATE EB1..3 / END PLATE EB2..3**

**ENDPLATTE EB1..3 / VERKETTUNGSPLATTE EB2..3**

End plate / Endplatte

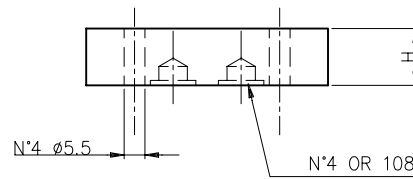
Weight / Gewicht

EB103 = 0.2 kg

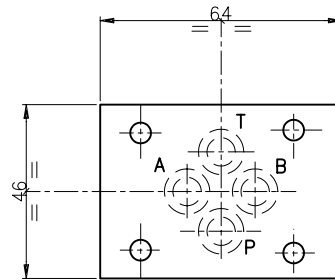
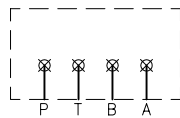
EB113 = 0.4 kg

EB103: Set of 16 pcs./Satz von 16 Stk.

EB113: Set of 8 pcs./Satz von 8 Stk.



Hydr. symbol  
Symbol



Ordering code  
Bestell-Code :



EUROFLUID  
end plate / Endplatte = B1

CETOP 3

0 Height / Hoehe = 10

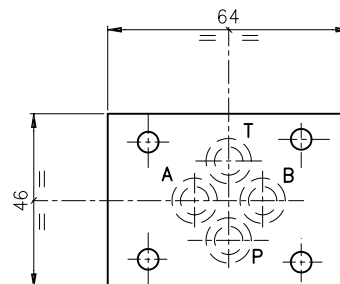
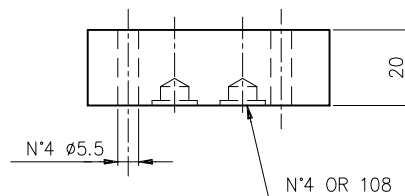
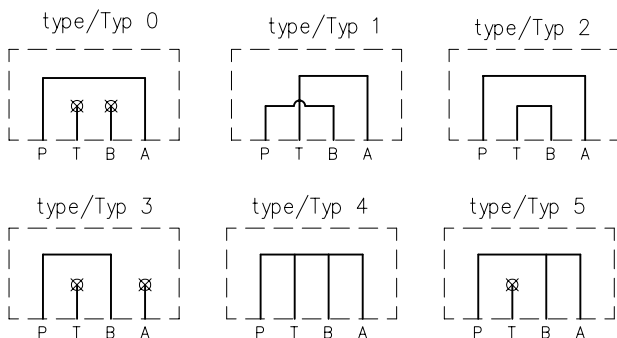
1 Height / Hoehe = 21

End plate / Verkettungsplatte.

Weight / Gewicht = 0.4 kg

Set of 8 pcs. / Satz von 8 Stk.

Hydr. symbol  
Symbol



Ordering code  
Bestell-Code :



EUROFLUID  
end plate = B2  
Verkettungsplatte

CETOP 3

0 - 1 - 2 - 3 - 4 - 5

see symbol - siehe Symbol