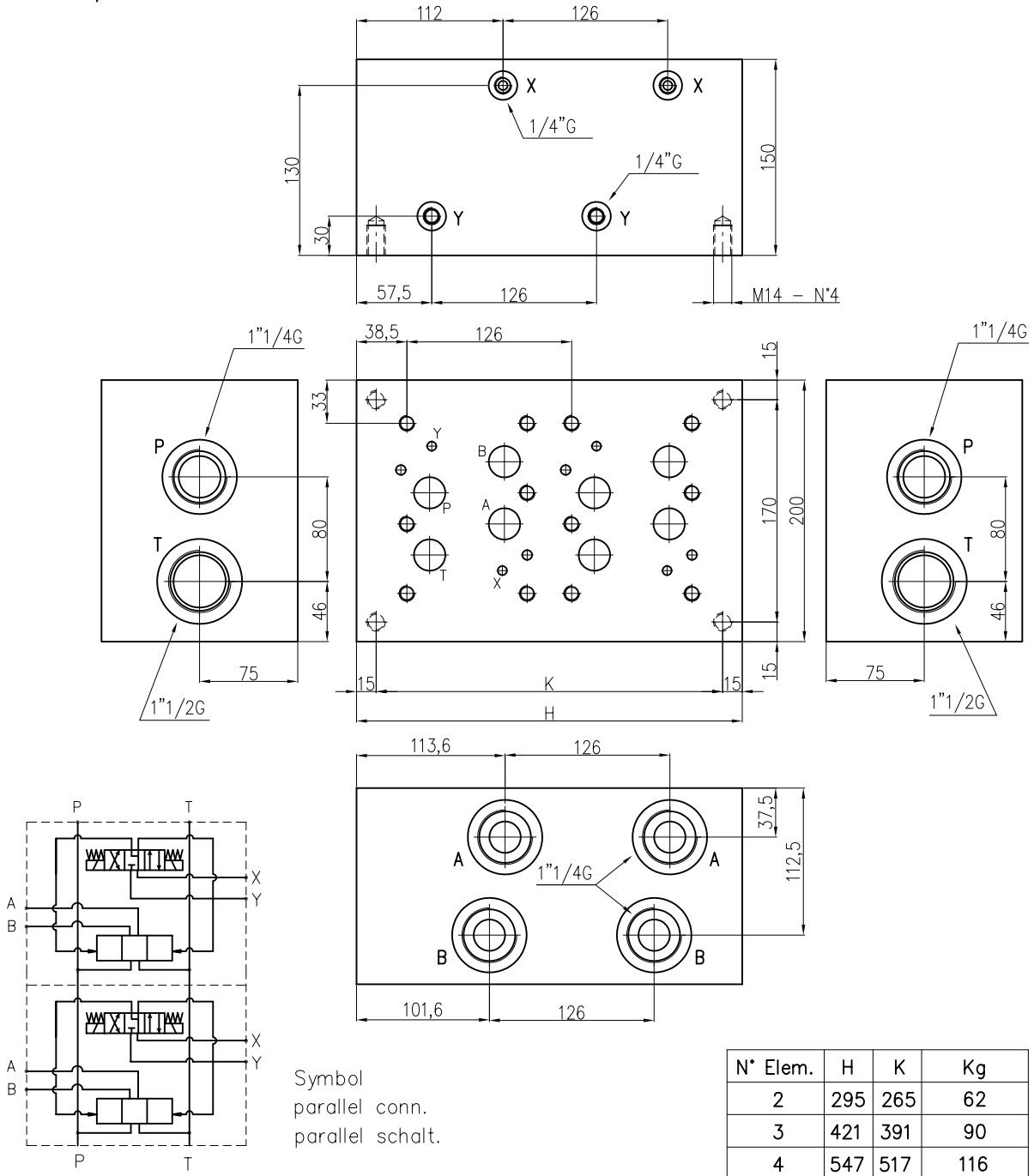


MONOBLOCK TYPE EM208/....Y
MONOBLOCK TYP EM208/....Y

Monoblock CETOP 8 with side ports A-B = 1"1/4G, P = 1"1/4G
 T = 1"1/2G, without relief valve. (RV)

Monoblock CETOP 8 mit seitlichen Anschlüssen A-B = 1"1/4G, P = 1"1/4G
 T = 1"1/2G, ohne DBV.



**CETOP 8
 NG 25**

Ordering code:

Bestell.Code: **EM 20 8 / * Y**

EUROFLUID

Monoblock = **M**

side ports = **10**
 Seitl. Anschl.

CETOP 8

Y = without RV
 ohne DBV

2-3-4 N. of elements
 Anzahl Elemente