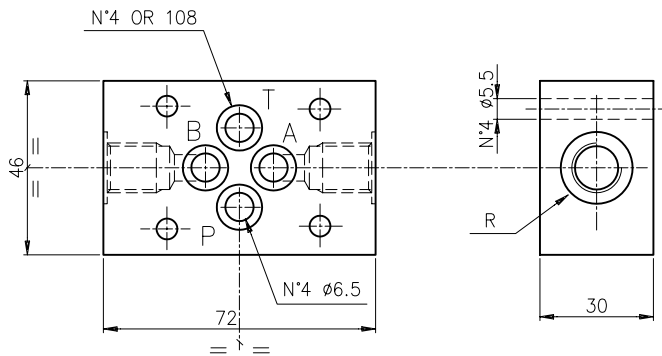


SUB PLATE FOR PACKING EB3..3.. AND TYPE EB503

GRUNDPLATTE FUER VERKETTUNGEN EB3..3.. UND TYP EB503

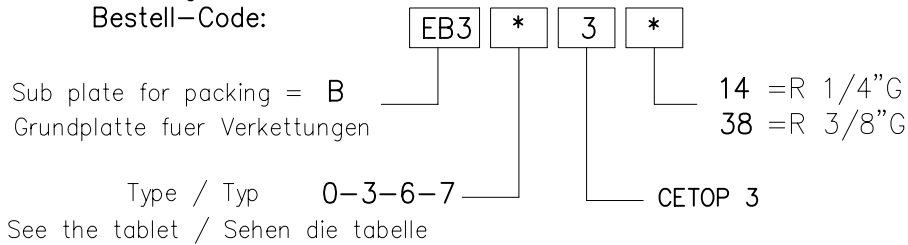
Sub plate for packing type EB3.... Weight = 0.6 Kg

Grundplatte fuer Verkettungen typ EB3.... Gewicht = 0.6 Kg



Tipo Type	Utilizzi Sorties
0	A e B
3	Side B P e T Side A
6	P e P
7	T e T

Ordering code
Bestell-Code:



Example:
ports on A and B

Beispiel:
Anschluesse in A und B

