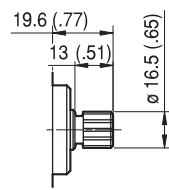
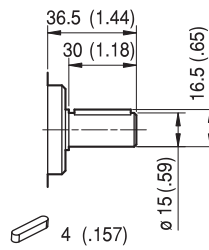
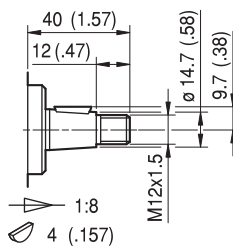
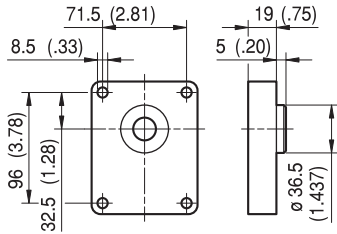


ALP2

FLANGE / FLANGES

ALBERI / SHAFTS



DIN 5482
B17x14

TO

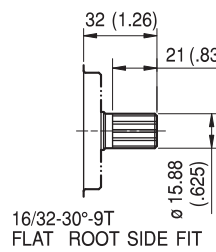
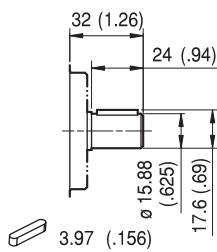
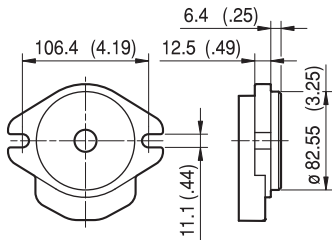
CO

SO

Coppia Max
Max Torque 145 Nm

Coppia Max
Max Torque 125 Nm

Coppia Max
Max Torque 130 Nm



16/32-30°-9T
FLAT ROOT SIDE FIT

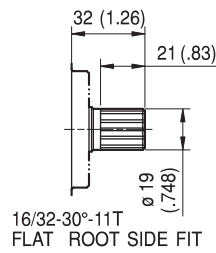
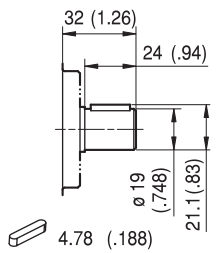
A

C1

S1

Coppia Max
Max Torque 105 Nm

Coppia Max
Max Torque 110 Nm



16/32-30°-11T
FLAT ROOT SIDE FIT

C2

S2

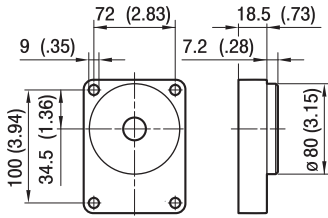
Coppia Max
Max Torque 150 Nm

Coppia Max
Max Torque 230 Nm

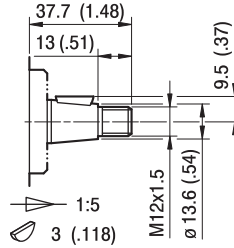
ALP2

FLANGE / FLANGES

ALBERI / SHAFTS

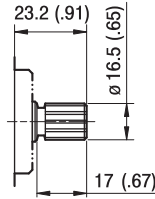


BK1



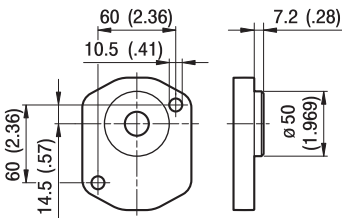
T1

Coppia Max
Max Torque 130 Nm

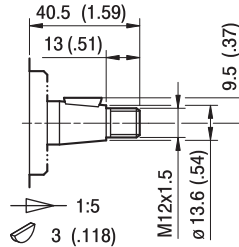


S3

DIN 5482
B17x14
Coppia Max
Max Torque 130 Nm

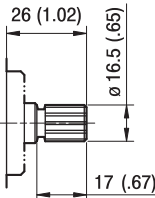


BK2



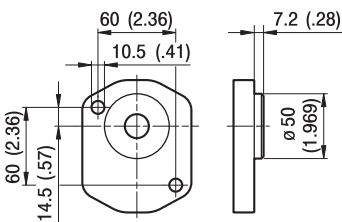
T2

Coppia Max
Max Torque 130 Nm

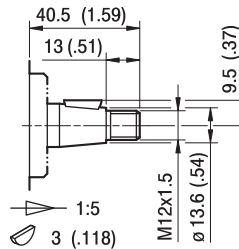


S4

DIN 5482
B17x14
Coppia Max
Max Torque 130 Nm

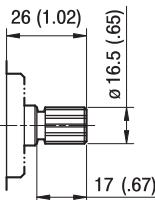


BK4



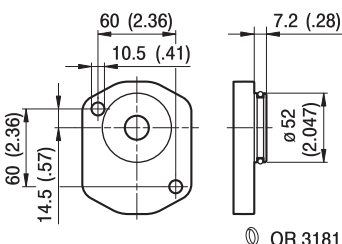
T2

Coppia Max
Max Torque 130 Nm



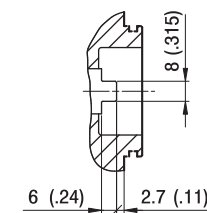
S4

DIN 5482
B17x14
Coppia Max
Max Torque 130 Nm



BK7

OR 3181

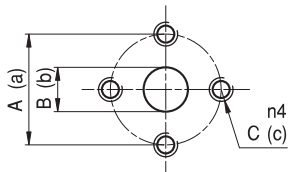


G0

Coppia Max
Max Torque 105 Nm

ALP2

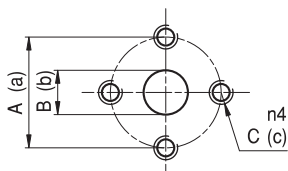
PORTE / PORTS



E

TIPO TYPE	ASPIRAZIONE INLET			MANDATA OUTLET		
	A	B	C	a	b	c
ALP2...6 ÷ ALP2...9	30	13	M6	30	13	M6
ALP2...10 ÷ ALP2...13	40	13	M8	40	13	M8
ALP2...16 ÷ ALP2...25	40	19	M8	40	13	M8
ALP2...30 ÷ ALP2...40	40	19	M8	40	19	M8
ALP2...50	40	21	M8	40	19	M8

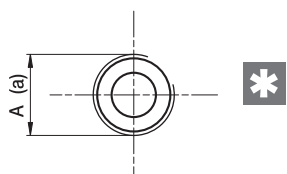
I valori delle coppie di serraggio delle viti presenti nel kit raccordo sono indicate a pag 57 (capitolo accessori).
Tightening torques of the fittings screws are specified on page 57 (accessories section).



EP

TIPO TYPE	ASPIRAZIONE INLET			MANDATA OUTLET		
	A	B	C	a	b	c
ALP2...6	40	13	M8	30	13	M6
ALP2...10 ÷ ALP2...13	30	13	M6	30	13	M6
ALP2...16 ÷ ALP2...40	40	19	M8	30	13	M6
ALP2...50	40	21	M8	30	19	M6

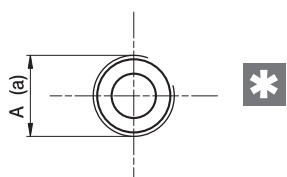
I valori delle coppie di serraggio delle viti presenti nel kit raccordo sono indicate a pag 57 (capitolo accessori).
Tightening torques of the fittings screws are specified on page 57 (accessories section).



FG

TIPO TYPE	ASPIRAZIONE INLET	MANDATA OUTLET
	A	a
ALP2...6 ÷ ALP2...16	G1/2	G1/2
ALP2...20 ÷ ALP2...50	G3/4	G1/2

Raccordo G1/2 coppia di serraggio massima 50 Nm. Raccordo G3/4 coppia di serraggio massima 60 Nm.
Consigliamo di richiedere conferma al fornitore del raccordo.
Tightening torques for G1/2 fitting: 50 Nm. Tightening torques for G3/4 fitting: 60 Nm. Please check with the fittings suppliers.



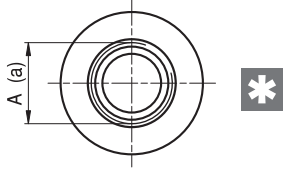
FC

TIPO TYPE	ASPIRAZIONE INLET	MANDATA OUTLET
	A	a
ALP2...6 ÷ ALP2...16	Rc1/2	Rc1/2
ALP2...20 ÷ ALP2...50	Rc3/4	Rc1/2

Raccordo Rc1/2 coppia di serraggio massima 50 Nm. Raccordo Rc3/4 coppia di serraggio massima 60 Nm.
Consigliamo di richiedere conferma al fornitore del raccordo.
Tightening torques for Rc1/2 fitting: 50 Nm. Tightening torques for Rc3/4 fitting: 60 Nm. Please check with the fittings suppliers.

ALP2

PORTE / PORTS

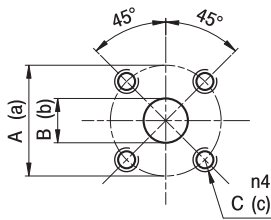


STANDARD SAE J1926/1

FA

TIPO TYPE	ASPIRAZIONE INLET	MANDATA OUTLET
	A	a
ALP2...6 ÷ ALP2...40	1 1/16-12 UNF	7/8-14 UNF
ALP2...50	1 5/16-12 UNF	7/8-14 UNF

Raccordo 7/8-14 UNF coppia di serraggio massima 70 Nm. Raccordo 1 1/16-12 UNF coppia di serraggio massima 70 Nm. Raccordo 1 5/16-12 UNF coppia di serraggio massima 80 Nm. Consigliamo di richiedere conferma al fornitore del raccordo.
 Tightening torques for 7/8-14 UNF fitting: 70 Nm. Tightening torques for 1 1/16-12 UNF fitting: 70 Nm.
 Tightening torques for 1 5/16-12 UNF fitting: 80 Nm. Please check with the fittings suppliers.



D

TIPO TYPE	ASPIRAZIONE INLET			MANDATA OUTLET		
	A	B	C	a	b	c
ALP2...6 ÷ ALP2...12	40	15	M6	35	15	M6
ALP2...13 ÷ ALP2...40	40	20	M6	35	15	M6

I valori delle coppie di serraggio delle viti presenti nel kit raccordo sono indicate a pag 57 (capitolo accessori).
 Tightening torques of the fittings screws are specified on page 57 (accessories section).

