

# FT2257/5



## IN LINE SINGLE-ACTING CONTROL VALVES

Their function is to control and, if necessary, to shut-off the flow in one direction, allowing a free return flow in the opposite direction. Appreciated for their aesthetic characteristics, they are a reliable solution. The suitable dimensioning has made possible to obtain, in a little space, a great mechanic resistance of the components. The spring in high-resistance material is housed in such a way that it does not close as a pack during the opening of the single-acting conical valve poppet.

Like all the valves of the series FT 2257 they ensure:

- metallic seal;
  - flow linearity at the opening;
  - accurate control for a wide range of flow rate, thanks to the double reference system
  - wide range of the flow rate control;
  - impossibility for the needle to leave its seat even in the max. opening position;
  - stable positioning thanks to a dowel inside the knob;
  - quickness in the assembling of the panel (the ring nuts (G) are supplied on request).
- The check valve is calibrated at 0,5 bar.



### On request

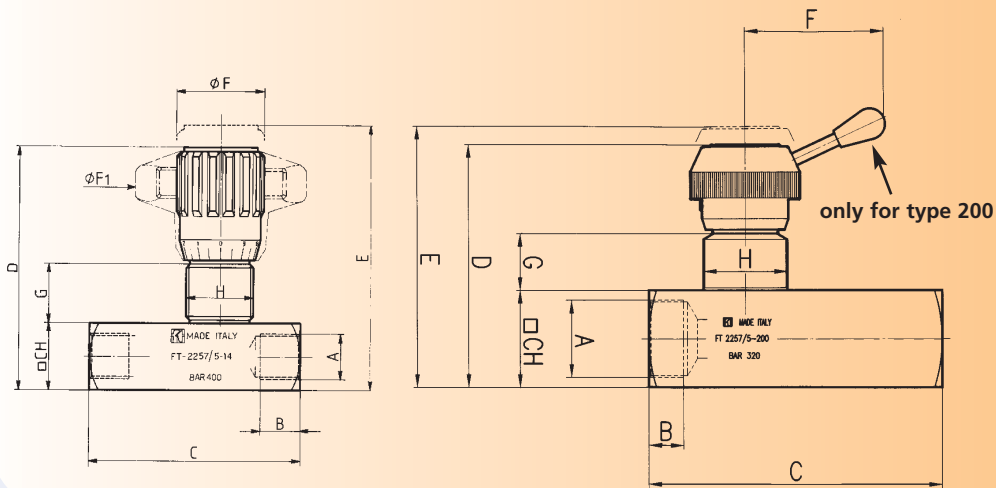
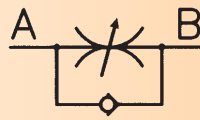
- NPT threads
- Equipped with ring nuts (G)
- Knob in ABS (mp)

## materials

<b>Body</b>	AISI 316 stainless steel
<b>Needle</b>	AISI 316 stainless steel
<b>OR</b>	Viton
<b>Antiextrusion ring</b>	PTFE
<b>Check Valve</b>	Acc. Inox AISI 316
<b>Spring</b>	Acc. Inox AISI 316
<b>Threaded end-plate</b>	Acc. Inox AISI 316
<b>Handwheel</b>	GD Al Si 12 - UNI 5706
<b>Handwheel (mp)</b>	ABS

## example for ordering

Code	Type	Panel ring	Viton seal	Plastic handwheel
FT 2257/5	12	G	-	mp



## dimensions

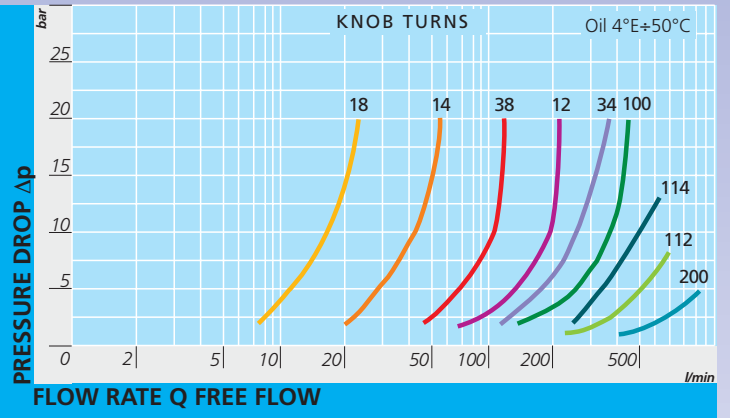
Type	A UNI 338	B	C	D	E	$\phi F$	$\phi F1$	G	H	CH	Weight kg
18	1/8"G	8,5	50	59	64	22	40	13,5	M17x1	16	0,130
14	1/4"G	12,5	66	71	78	27	50	17	M20x1	20	0,250
38	3/8"G	12,5	79	84	93	33	70	19,5	M25x1,5	25	0,500
12	1/2"G	15,5	94,5	97	107	38	80	21	M30x1,5	30	0,750
34	3/4"G	17	115	120,5	132,5	47	100	26,5	M40x1,5	40	1,600
100	1"G	20	138,5	151,5	167,5	58	120	35	M50x1,5	50	3,050
114	1 1/4"G	22	157	156,5	172,5	58	120	35	M50x1,5	55	3,750
112	1 1/2"G	24	190	167	181	58	120	35	M55x2	65	5,760
200	2"G	27	228	188	202	108	-	44	M65x2	75	10,000

## technical data

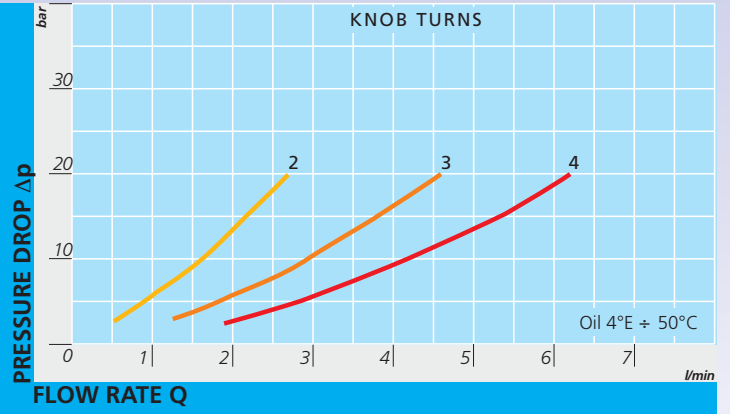
Type	Port section sq. cm <sup>2</sup>	Working pressure bar	Min. burst. pressure bar	Working temp. °C	Filtration grade $\mu m$
18	0,12	400	1600	-20 / +130°C	25
14	0,19	400	1600	-20 / +130°C	25
38	0,39	400	1600	-20 / +130°C	25
12	0,68	400	1600	-20 / +130°C	25
34	1,13	400	1600	-20 / +130°C	25
100	2,09	320	1300	-20 / +130°C	25
114	2,09	320	1300	-20 / +130°C	25
112	3,14	320	1300	-20 / +130°C	25
200	4,91	320	1300	-20 / +130°C	25



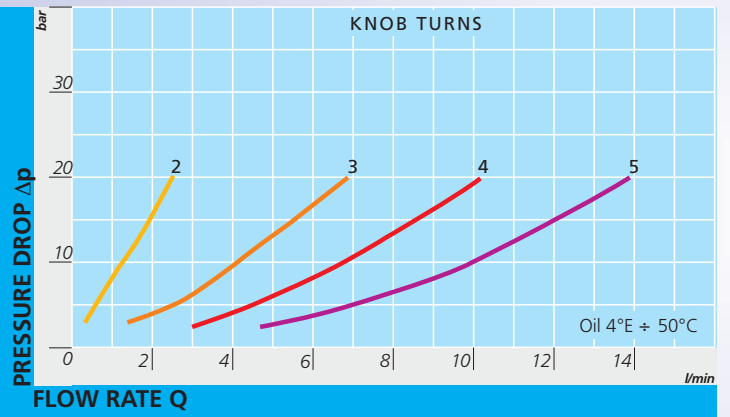
FT 2257/5



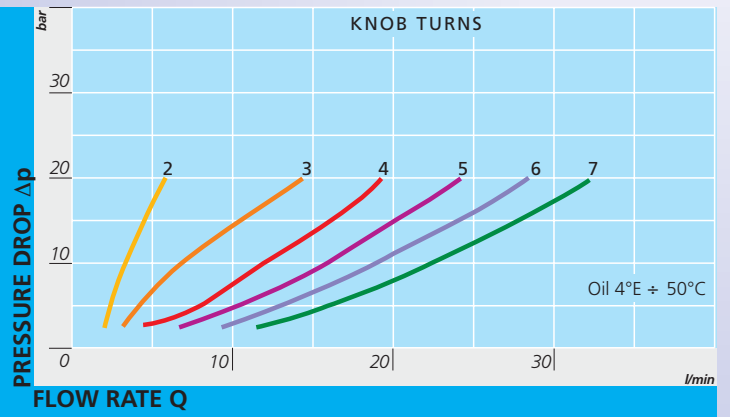
FT 2257/5-18



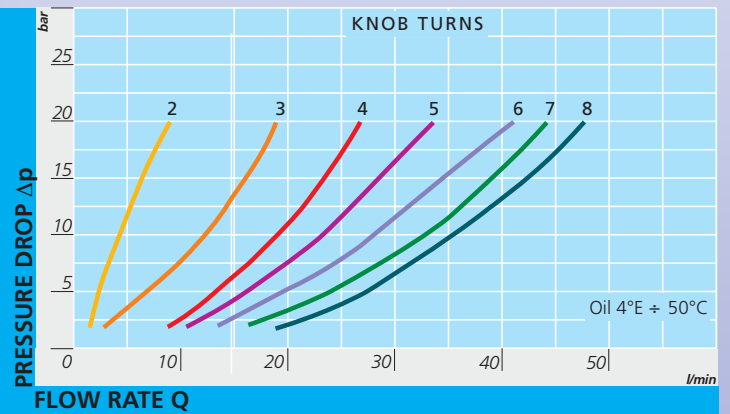
FT 257/5-14



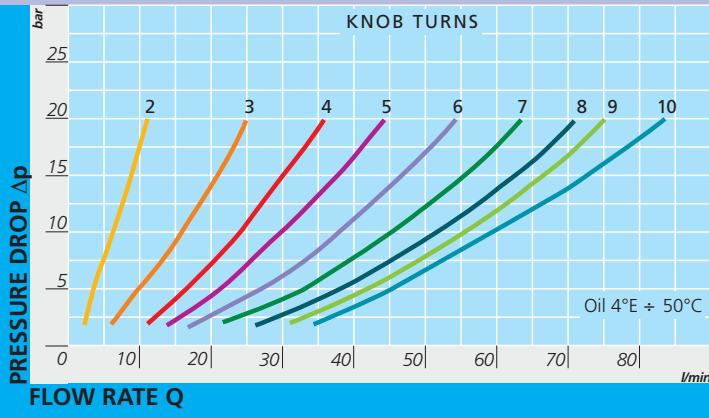
FT 257/5 - 38



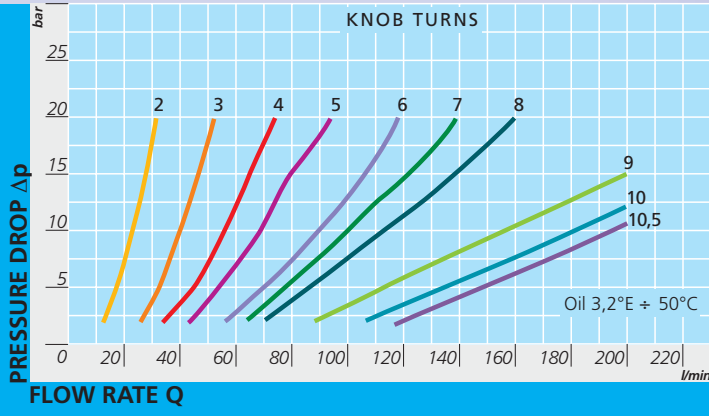
FT 2257/5 - 12



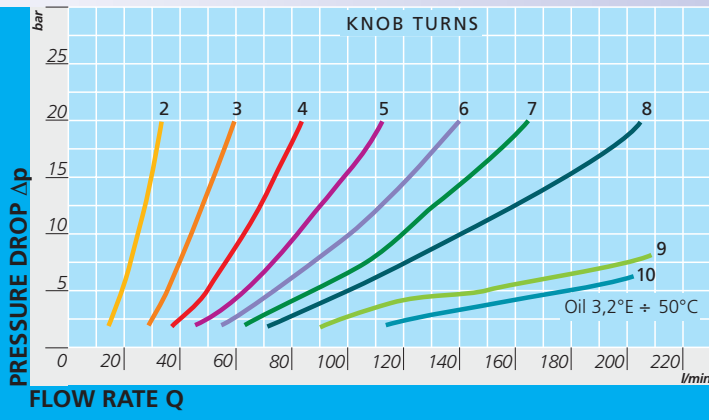
FT 2257/5 -84



FT 2257/5 -114



FT 257/5 -112



FT 2257/5 -200

