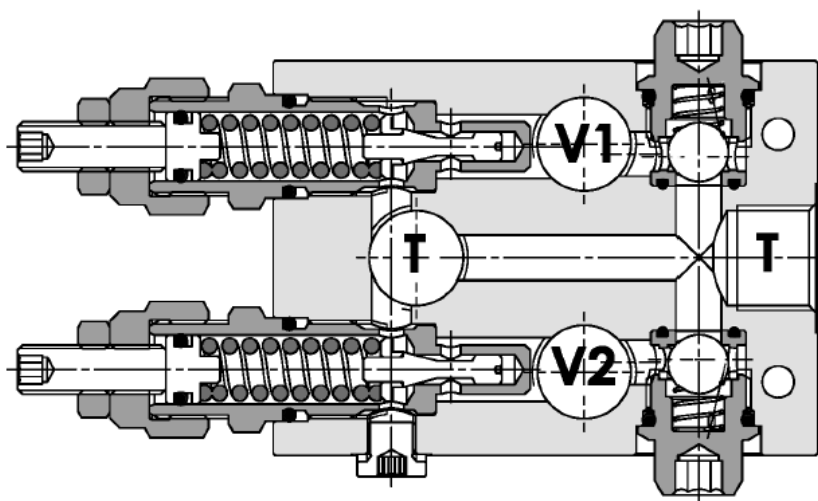
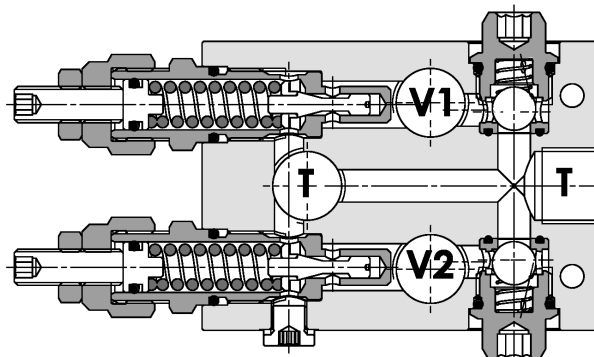
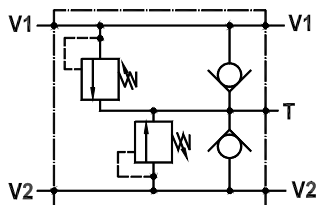


Cross-over kleppen met nazuig



Valvole di regolazione pressione doppie incrociate ad azione diretta, anticavitazione
Dual cross direct acting relief valves line mounted version, anti-cavitation

Rev.01-2010/02



SPECIFICHE TECNICHE

Materiali: cartucce in acciaio zincato, parti interne in acciaio trattato termicamente. Corpo in lega di alluminio.

Portata: 40 l/min

Pressione max.: 250 bar

Regolazione pressione: mediante vite

Peso: 1,050 Kg

TECHNICAL SPECIFICATIONS

Materials: cartridge in steel zinc plated, internal parts are in hardened steel. Body is in high strenght aluminium alloy.

Rated flow: 40 l/min

Max. pressure: 250 bar

Adjustement means: leakproof screw

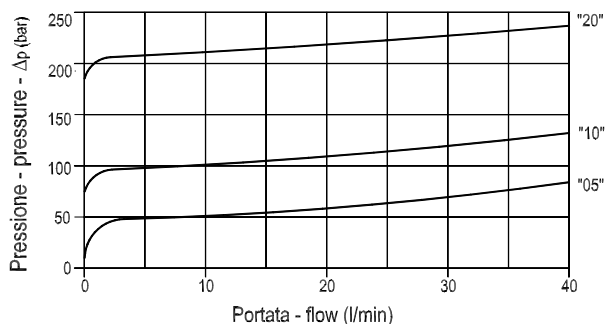
Weight: 1,050 Kg

DIAGRAMMA PERDITE DI CARICO - PRESSURE DROP CURVES

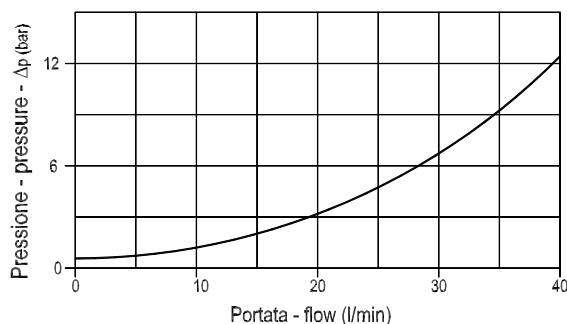
Viscosità olio 24 mm²/sec. (3,5 °E)
 Temperatura 50 °C

Oil viscosity 24 mm²/sec. (3,5 °E)
 Temperature 50 °C

V2 → T

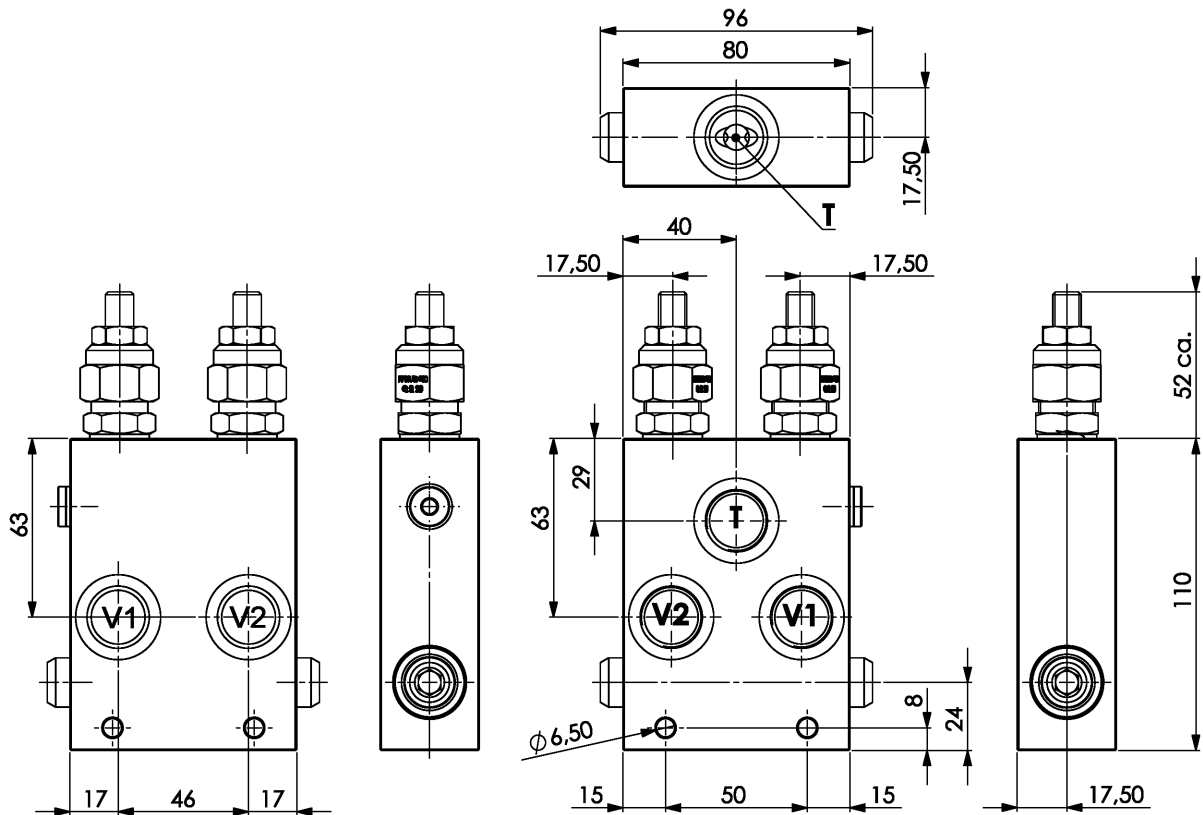


T → V2

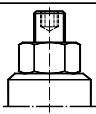
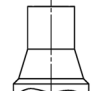


Valvole di regolazione pressione doppie incrociate ad azione diretta, anticavitazione
Dual cross direct acting relief valves line mounted version, anti-cavitation

Rev.01-2010/02



MOLLE - SPRINGS				*
Codice Code	Campo taratura min.-max. bar Adjustable pressure range bar	Increment. press. bar/giro vite Pressure increase bar/turn	Taratura standard bar Standard setting bar	Colore Color
05	5 - 50	10	5	Bianco White
10	30 - 100	20	30	Giallo Yellow
20	50 - 220	40	50	Verde Green

REGOLAZIONI - ADJUSTEMENTS		*
Codice Code	Tipo - Type	
P	Vite esterna con esagono incassato Leakproof hex. socket screw	
Z	Cappello antimanomissione Tamperproof cap	

ESEMPIO DI ORDINAZIONE - ORDERING CODE EXAMPLE

F P M **D** **4 0** **I L** **A C** **P** **1 / 2** **A** **2 0**

* P/Z:
Regolazioni - Adjustements

* "05" / "10" / "20":
Campi di taratura pressione - Adjustable pressure range